



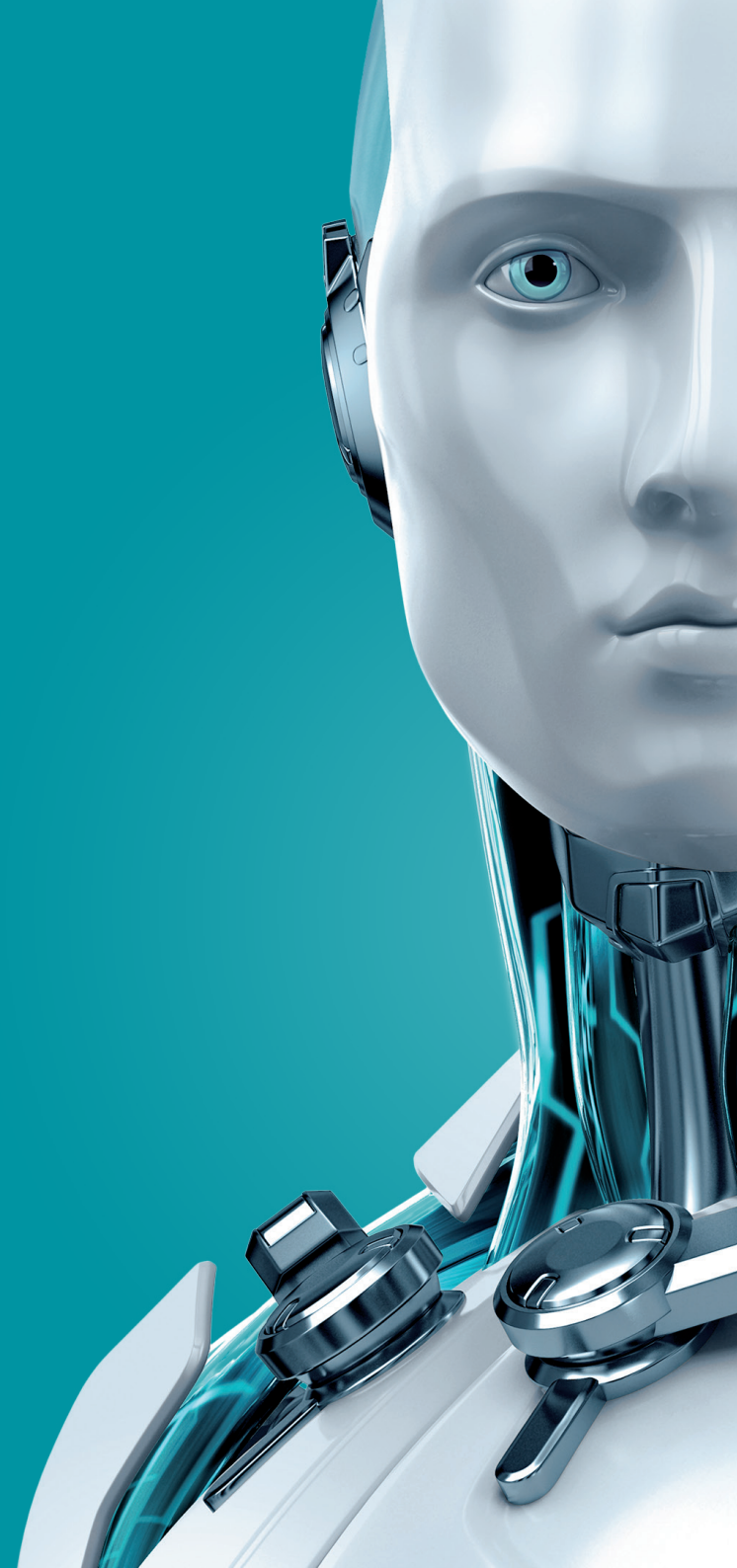
# NOD32<sup>®</sup> ANTIVIRUS

Perfect for gamers, power users and slower PCs



**2020**  
EDITION

ENJOY SAFER TECHNOLOGY™





NOD32<sup>®</sup>  
ANTIVIRUS

With the legendary ESET<sup>®</sup> NOD32 engine at its core, ESET NOD32 Antivirus provides essential defense against malware, built on ESET's trademark best mix of detection, speed and usability.



### Legendary NOD32 Antivirus

Protects you against all types of malware, including viruses, ransomware, worms and spyware.



### Light on computer resources

Enjoy the full power of your computer. Play, work and browse the internet without slowdowns.



### Uninterrupted gaming and videos

No system updates or annoying pop-ups while you play games or run a program in full-screen mode.

110M+

safe users worldwide

100+

prestigious VB100 awards

30+

years of NOD32 technology

### Award-winning protection

Independent evaluators put ESET among the best in the industry, shown also by the record number of *Virus Bulletin's* VB100 awards.

### State-of-the-art technology

Advanced Machine Learning, DNA detections and a cloud-based reputation system are just some of the cutting-edge tools developed in our 13 R&D centers.

### Made in the European Union

ESET values, like integrity, reliability and independence, all stem from our European roots and are safeguarded by our private ownership structure.



## Making the internet safer for you to enjoy

Explore the great online, securely protected by award-winning ESET NOD32 detection technology. It's trusted by over 110 million users worldwide to detect and neutralize all types of digital threats, including viruses, ransomware, rootkits, worms and spyware. It also protects against techniques that seek to evade detection, and blocks targeted attacks and exploits. At the same time, its Anti-Phishing feature protects you from illegitimate websites that try to access your sensitive information, such as usernames and passwords.

<b>Antivirus and Antispyware</b>	Provides proactive protection against all types of online and offline threats and prevents malware spreading to other users.
<b>Anti-Phishing</b> <small>IMPROVED</small>	Protects your privacy and assets against attempts by fraudulent websites to acquire sensitive information such as usernames, passwords or banking details, or feed you fake news from seemingly reputable sources. Protects you from homoglyph attacks (replacing characters in links with ones that look similar but are actually different).
<b>Advanced Machine Learning</b> <small>NEW</small>	In addition to ESET Machine Learning in the cloud, this proactive layer runs locally. It is specifically designed to detect advanced, never seen before malware, while having a low impact on performance.
<b>Exploit Blocker</b>	Blocks attacks specifically designed to evade antivirus detection and eliminates lockscreens and ransomware. Protects against attacks on web browsers, PDF readers and other applications, including Java-based software.
<b>Advanced Memory Scanner</b>	Enables improved detection of persistent malware that employs multiple layers of encryption to conceal its activity.
<b>Cloud-Powered Scanning</b>	Speeds up scans by whitelisting safe files based on the ESET Live Grid® file reputation database. Helps to proactively stop unknown malware based on its behavior, by comparing it with our cloud-based reputation system.
<b>Scan While Downloading Files</b>	Decreases scanning time by scanning specific file types – such as archives – during the download process.
<b>Idle-State Scanning</b>	Aids system performance by performing in-depth scans when your computer is not in use. Helps detect potential inactive threats before they can cause damage.
<b>Device Control</b>	Allows you to prevent unauthorized copying of your private data to external devices. Allows you to block storage media – CDs, DVDs, USB sticks and disk storage devices. Lets you block devices connecting via Bluetooth, FireWire and serial/parallel ports.
<b>Host-Based Intrusion Prevention System (HIPS)</b> <small>IMPROVED</small>	Lets you customize the behavior of the system in greater detail with focus on behavioral detection. Gives you the option to specify rules for system registry, active processes and programs to fine-tune your security posture.
<b>Script-Based Attack Protection</b>	Detects attacks by malicious scripts that try to exploit Windows PowerShell. Also detects malicious JavaScripts that can attack via your browser. Mozilla Firefox, Google Chrome, Microsoft Internet Explorer and Microsoft Edge browsers are all supported.
<b>Ransomware Shield</b>	Blocks malware that tries to lock you out of your personal data and then asks you to pay a 'ransom' to unlock it.
<b>UEFI Scanner</b>	Protects from threats that attack your computer on a deeper level, even before the start of Windows - on systems with the UEFI system interface.

## Enjoy the full power of your computer

Leaving more power to the programs you use daily, ESET NOD32 Antivirus lets you play, work and browse the internet without slowdowns. Stay unplugged and online longer with battery-saving mode, and enjoy gaming without distracting pop-ups.

## Enjoy more control over your licenses at my.eset.com

Create a free my.eset.com account and enjoy an instant overview of the status of your licenses and connected devices.

## Install and forget, or customize to meet your exact requirements

Delivering top protection right from the start with its default settings, ESET NOD32 Antivirus keeps you informed about potential security issues and lets you address them directly from the main screen. Its sleek user interface is designed to let you easily set up all routine tasks. In addition, you can fine-tune your security profile with more than 150 detailed settings.

<b>Small System Footprint</b>	Maintains high performance and extends the lifetime of hardware. Fits any type of system environment. Saves internet bandwidth with extremely small update packages.
<b>Gamer Mode</b>	ESET NOD32 Antivirus automatically switches to silent mode if any program is run in full-screen. System updates and notifications are postponed to save resources for gaming, video, photos or presentations.
<b>Portable Computer Support</b>	Postpones all non-actionable pop-up windows, updates and system-hungry activities to preserve system resources so that you can focus on gaming or films.
<b>License Manager</b>	View, manage and associate your licenses and ESET installations straight from our easy-to-use my.eset.com portal.
<b>One-Click Solution</b>	Lets you view your protection status and access the most frequently used tools from all screens. Offers comprehensive, one-click solutions to potential issues.
<b>Smooth Product Upgrades</b>	Benefit from new protection technologies as soon as they become available, for a continuously high level of security.
<b>Settings for Advanced Users</b>	Offers in-depth security settings to fit your needs. Allows you to define maximum scanning depth, scanning time, size of the scanned files and archives, and much more.
<b>ESET SysInspector®</b>	An advanced diagnostic tool that captures critical information from the system to troubleshoot a broad range of security and compatibility issues.
<b>Security Report</b>	Gives you a monthly insight into how ESET protects your computer. This summary includes information about detected threats, blocked web pages, intercepted spam emails, blocked webcam accesses and more.